



NAMASTE HIMALAYA

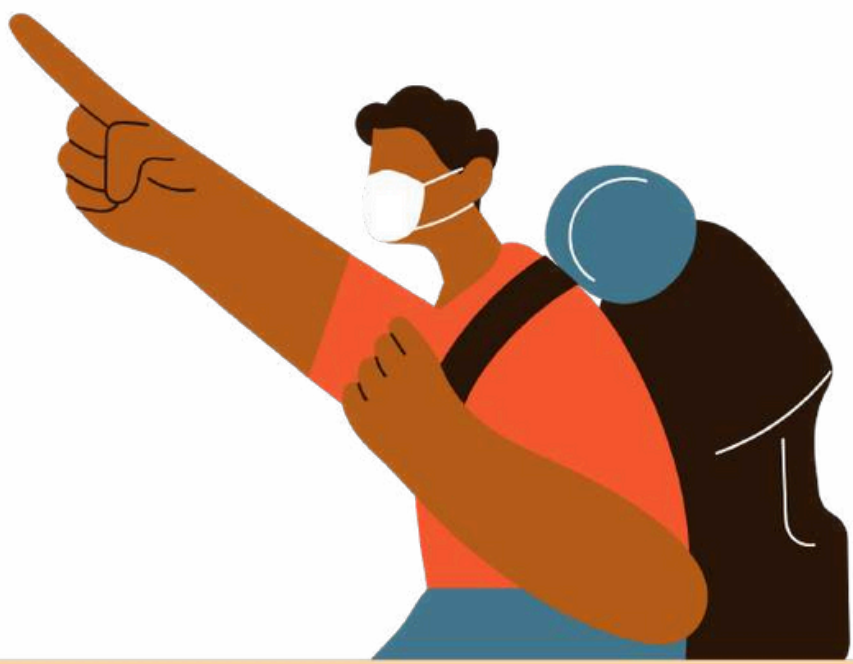
BRAHMATAL TREK



+91 7536014751



info@namastehimalaya.com



TREK OVERVIEW



LOCATION

Uttarakhand, India



DISTANCE

28Km



MAX ALTITUDE

3,735 m (12,250 ft)



LAST ATM

Lohajung



BEST SEASON

Feb, Mar, Apr & May



BASE CAMP

Lohajung



DIFFICULTY

Moderate



DURATION

6 Days & 5 Nights



SERVICE FROM

Rishikesh to Rishikesh



+91 7536014751

SHORT ITINERARY



DAY 1

Arrival and Drive to Lohajung

DAY 2

Lohajung to Bekaltal Camp

DAY 3

Bekaltal to Brahmatal Camp

DAY 4

Brahmatal Camp to Brahmatal Top Summit and Back

DAY 5

Brahmatal to Lohajung (about 14 km downhill)

DAY 6

Departure



ITINERARY



DAY 1

Arrival and Drive to Lohajung

- Arrive at Dehradun or Rishikesh by flight/train.
- Drive to Lohajung village in Chamoli district (approx. 8-10 hours by road), the base point for the trek.
- Check into a guesthouse or campsite. Rest and prepare for the trek starting the next day.



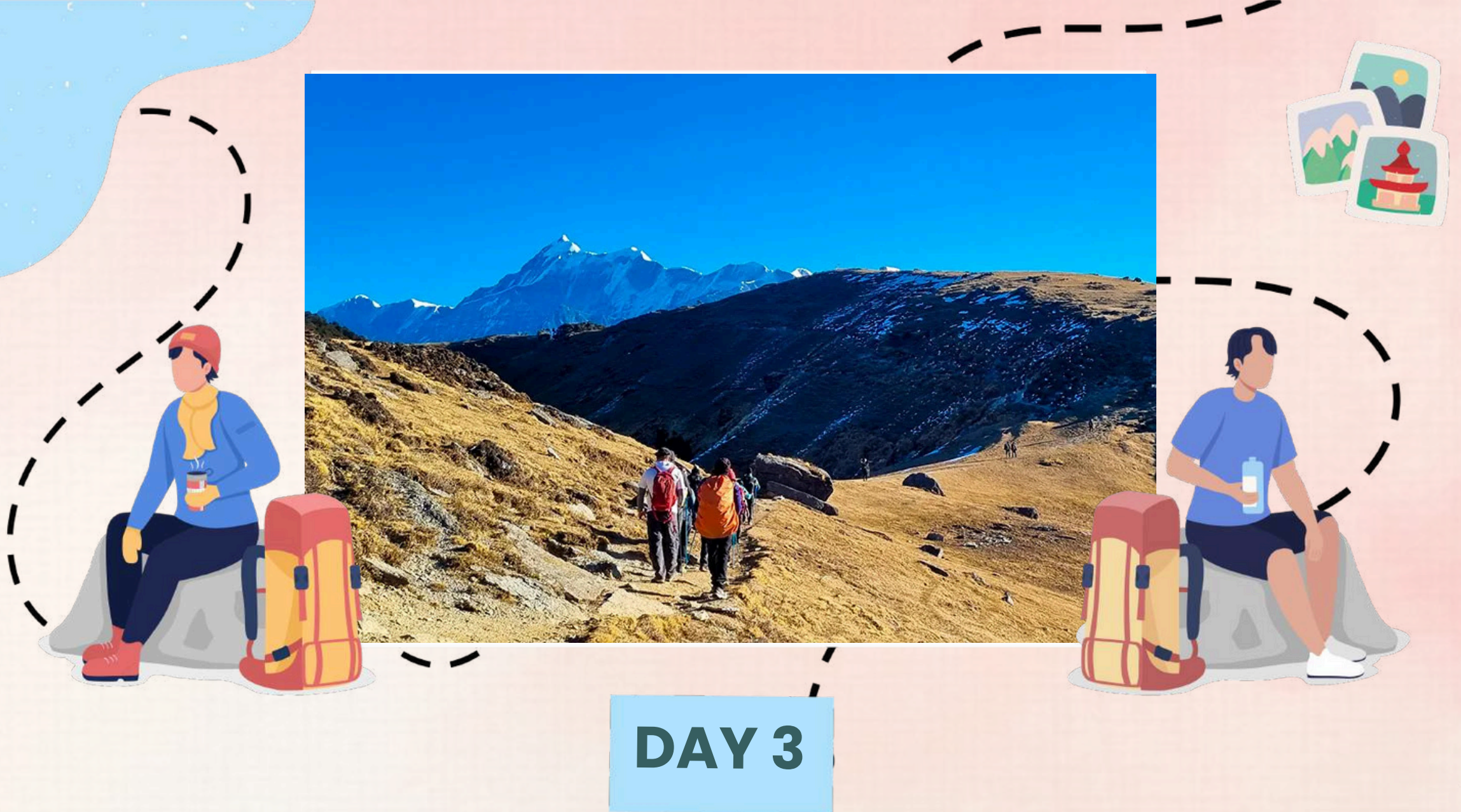


DAY 2

Lohajung to Bekaltal Camp

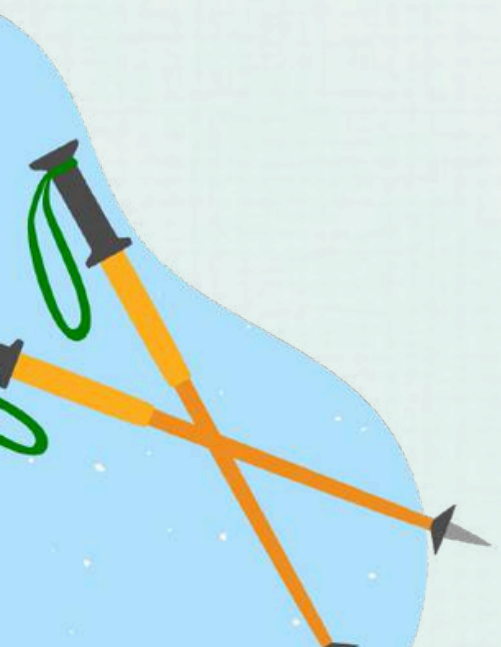
- Begin trek from Lohajung through lush oak and rhododendron forests.
- Enjoy views of nearby mountain peaks as the trail ascends.
- Reach the beautiful Bekaltal lake campsite nestled in a meadow.
- Set up camp, relax, and take in the serene surroundings.





Bekaltal to Brahmatal Camp

- The trail becomes snow-laden in the winter months, traversing through alpine meadows and snowfields.
- Reach Brahmatal Lake, usually frozen in winter and beautifully scenic in summer.
- Camp near the lake with panoramic views of Mount Trishul and Nanda Ghunti.
- Enjoy starry Himalayan nights and explore the area.





DAY 4

Brahmatal Camp to Brahmatal Top Summit and Back

- Early morning trek to Brahmatal Top for spectacular 360-degree views of the Garhwal Himalayas, including Trishul, Nanda Ghunti, Chaukhamba, and more.
- Spend time enjoying sunrise or sunset at the summit (weather permitting).
- Descend back to camp for rest and an overnight stay.





Brahmatal to Lohajung (about 14 km downhill)

- *Begin the trek down to Lohajung, enjoying changing landscapes from snowfields to forests.*
- *Reach Lohajung by afternoon.*
- *Celebrate the trek completion and rest overnight in village.*





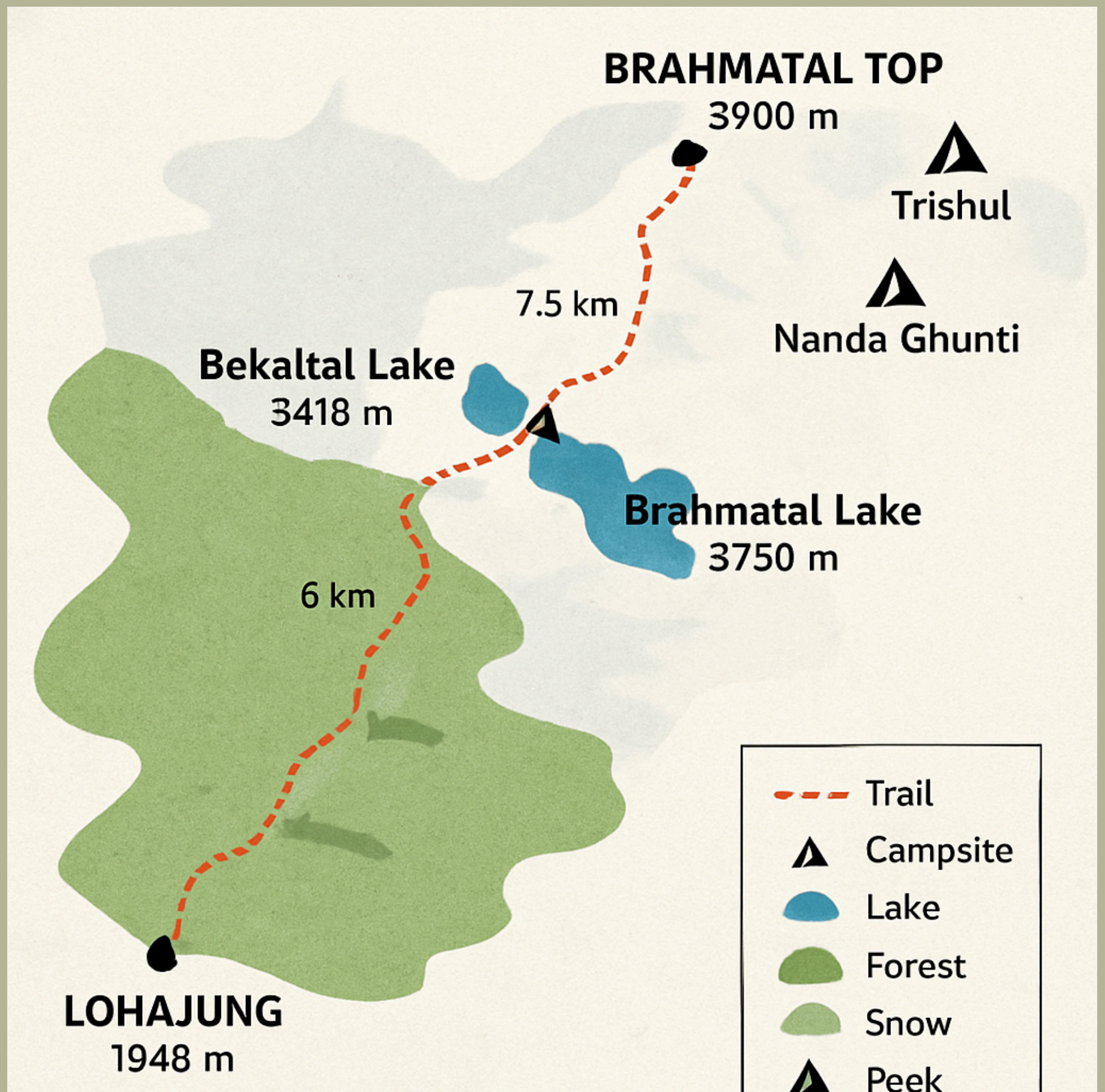
DAY 6

Departure

- Leave Lohajung and drive back to Dehradun or Rishikesh.
- Continue onward journey or departure plans.



TREK MAP





INCLUSIONS



- Mealswhile ontrek (Veg.).
- All necessary entry fees and permits.
- **Accommodation:-** Guest house / Camping during Trek.
- Mountaineering qualified & professional trek Leader, guide, cook, and Support staff.
- First aid medical kits, stretcher, and oxygen cylinder.
- **Trek equipment:** Sleeping bag, mattress, tent, kitchen & dining tent, toilet tent, utensils, and crampon (if required)
- Staff Insurance.
- Porters/mules to carry central equipment.

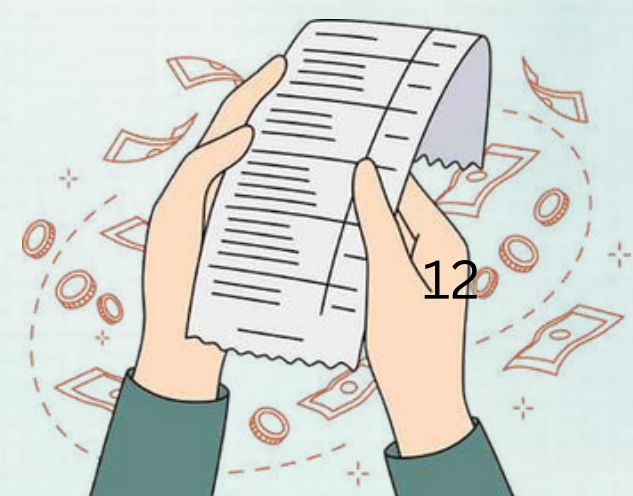




EXCLUSIONS



- Any kind of personal expenses.
- Food during transit.
- Mules or porters to carry personal luggage.
- Insurance.
- Transport (Non Ac)
- Any kind of emergency evacuation charges
- 5% GST
- Any expense incurred or loss cost by reasons beyond our control such as bad weather, natural calamities delays/rescheduling/ evacuations (Landslides, cancellations, Flight delay any accidents/medicals riots/strikes/war/pandemics etc.
- Anything not specifically mentioned under the head.



WHAT TO CARRY



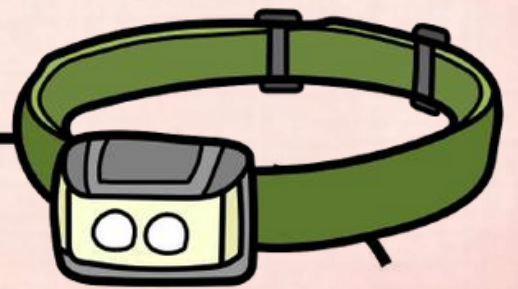
TREKKING SHOES



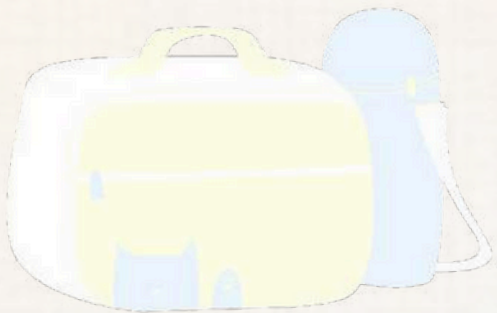
BACKPACK



HAND GLOVES



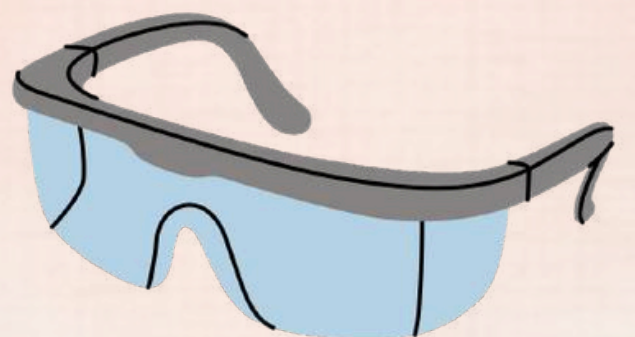
HEAD LAMP



LUNCHBOX



SOCKS



UV SUNGLASSES



THERMALS



3 TSHIRTS



JACKETS



2 TREK PANTS



CAP



FLEECE & HOOD



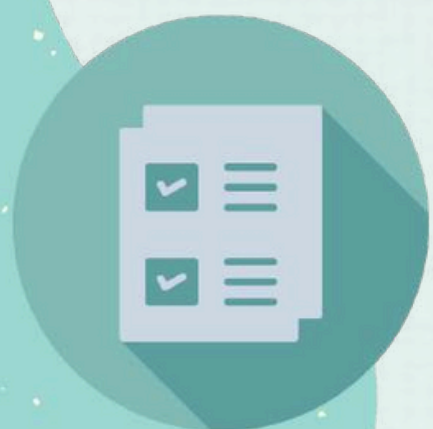
RAIN COVER

CANCELLATION POLICY

Life is unpredictable and we understand sometimes you have to cancel or change your trip dates and it is our endeavour to make it as easy possible for you. However, please understand we plan everything including guide fees, permits, accommodation and ration in advance. Therefore any cancellation means inconvenience and certain losses to the people involved in various stages of programme. Keeping that in mind, our cancellation charges are as below- Cancellation prior to 30 days from start of the event: Get monetary refund with 15% of cancellation charges on trek fee.

Cancellation between 30 days and 15 days to the start of event: 50% on trek fee is non refundable and the remaining 50 % will be given as cash voucher which is valid for 1 year.

Cancellation less than 15 days to the start of event: No refund. Please note cancellation will be only accepted by email. Booking amount is non refundable.



CANCELLATION POLICY

Note: The Namaste Explorer reserves the right to cancel a programme before departure in the event of logistical problems arriving due to natural calamities, strikes, wars or any other circumstances that makes the event inadvisable. In this case, 50% on trek fee is non refundable and the remaining 50 % will be given as cash voucher which is valid for 1 year. Itinerary changes & trip delays: We plan itineraries based on the information at the time of planning and in rare circumstances, there are subject to change. In the event that the itinerary is changes or delayed due to unforeseen circumstances such as bad weather conditions, transportation delays, government intervention, landslides etc. We will always aim to give you the best experience possible. However The Namaste Explorer are not be held responsible for the cost of delay or changes

CONTACT US



info@namastehimalaya.com



+91 7536014751



Payment



Namastey Himalaya



UPI ID: namasteyhimalaya-1@okaxis

CONTACT US



info@namastehimalaya.com



+91 7536014751

