



NAMASTE HIMALAYA

# DAYARA BUGY TREK



+91 7536014751



info@namastehimalaya.com



# TREK OVERVIEW



## LOCATION

*Uttarakhand, India*



## DISTANCE

*24Km*



## MAX ALTITUDE

*12,000 feet (3,658 meters)*



## LAST ATM

*Raithal or Barsu*



## BEST SEASON

*Apr, June, Sept, Dec*



## BASE CAMP

*Raithal or Barsu*



## DIFFICULTY

*Moderate*



## DURATION

*4 Days & 3 Nights*



## SERVICE FROM

*Rishikesh to Rishikesh*



+91 7536014751

# SHORT ITINERARY



## DAY 1

*Pickup from Dehradun railway station and drive to Raithal Base Camp*

## DAY 2

*Trek to Gui campsite from Raithal village*

## DAY 3

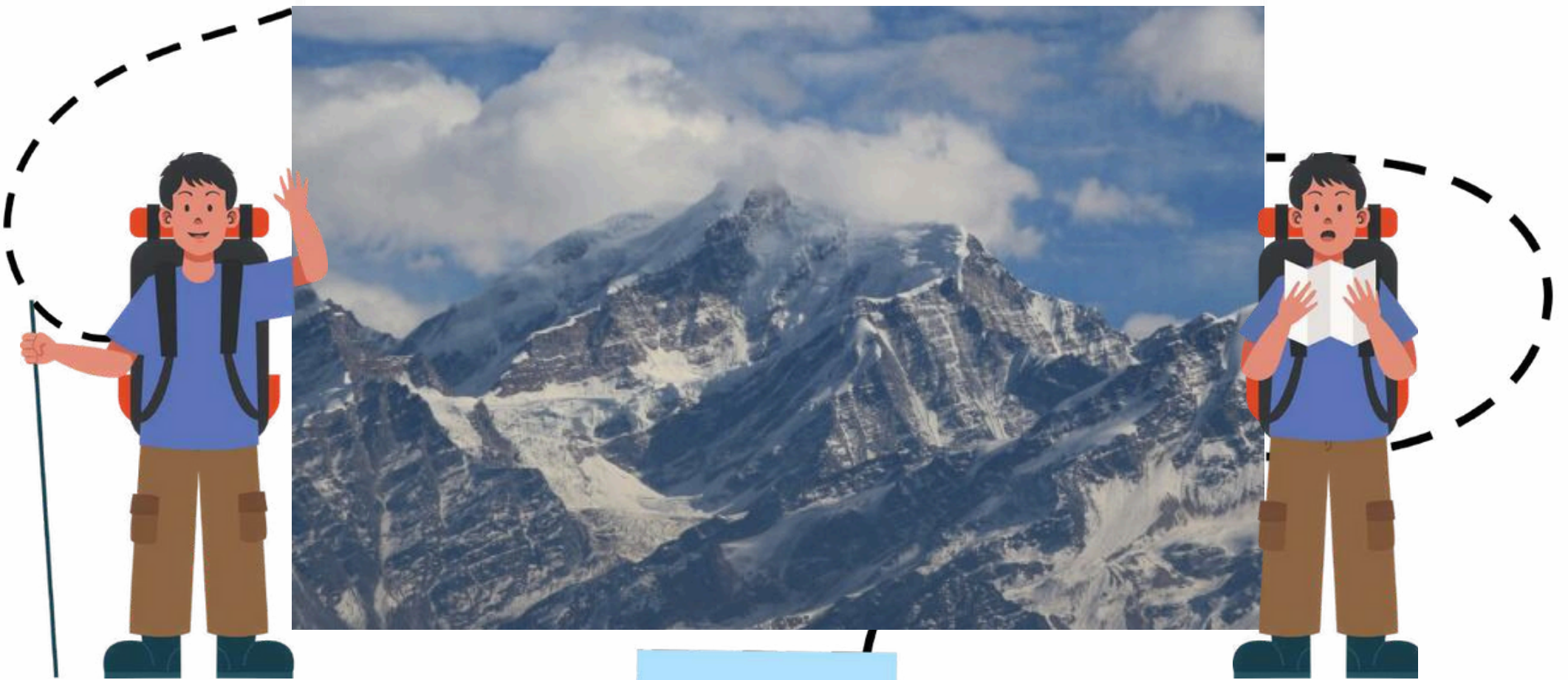
*Dayara Bugyal Summit and back to Gui campsite*

## DAY 4

*Way back Raithal Basecamp*



# ITINERARY



## DAY 1

*Pickup from Dehradun railway station and drive to Raithal Base Camp*

Embark on a scenic driving itinerary commencing in Dehradun, progressing through Mussoorie, Suwakholi, and Uttarkashi, culminating in Raithal village, the designated base for the Dayara Bugyal Trek, while providing opportunities to appreciate Himalayan vistas, traverse forested roadways, and experience riverside landscapes.

The itinerary includes a driving distance of 175 km, with an estimated duration of 7 to 8 hours. The route ascends to an altitude of 7,423 ft, and overnight accommodation is planned at a homestay in Raithal Village.





## DAY 2

### *Trek to Gui campsite from Raithal village*

The trek from Raithal to Gui offers a serene experience through forested trails and picturesque clearings, characterized by gentle ascents and captivating vistas, thus promising a tranquil and fulfilling day in the Himalayas.

The trek involves an altitude gain from 7,423 feet to 9,884 feet, covering a distance of 5 kilometers. The estimated duration for the trek is 4 to 5 hours, with overnight accommodation provided in tents.



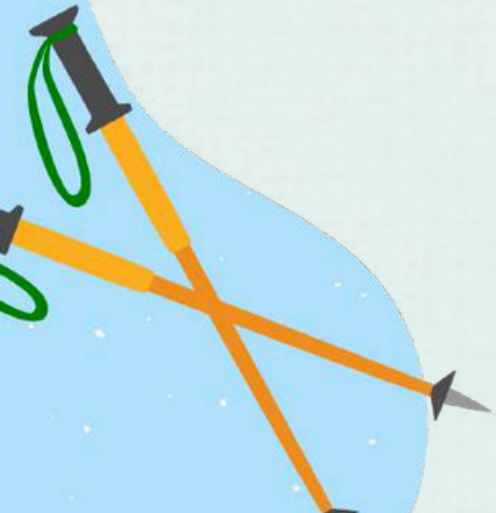


## DAY 3

### *Dayara Bugyal Summit and back to Gui campsite*

Trek from Gui Camp to the summit of Dayara Bugyal through forested slopes and vast alpine meadows, enjoying breathtaking Himalayan views before descending back to camp after a fulfilling summit experience.

The elevation profile indicates an ascent from 9,884 ft to 11,181 ft, followed by a descent back to 9,884 ft. The trekking distance is 12 km, with an estimated trekking time of 7 to 8 hours. Accommodation will be tent-based.





## DAY 4

### *Way back Raithal Basecamp*

The Dayara Bugyal Trek concludes with a descent of 5 km from Gui Camp to Raithal, traversing picturesque meadows and forests. Upon arrival in Raithal, a celebratory certificate ceremony will be held to commemorate the successful completion of the trek. Subsequently, participants will be transported to the Dehradun Train Station for their departure.

The trek encompassed an altitude loss from 9,884 ft to 7,423 ft, covering a distance of 5 km and lasting 3 to 4 hours. Subsequent transportation involved a taxi ride to Dehradun, spanning 175 km with a duration of 7 to 8 hours, culminating in a drop-off at the Dehradun railway station.



# TREK MAP

## DAYARA BUGYAL TREK





# INCLUSIONS



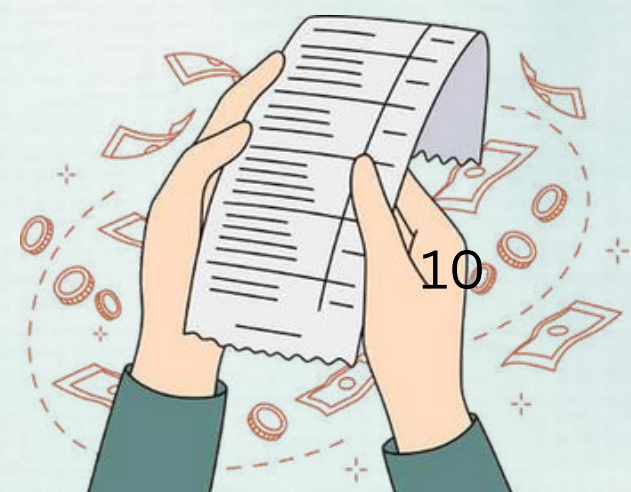
- Meals while on trek (Veg.).
- All necessary entry fees and permits.
- **Accommodation:-** Guest house / Camping during Trek.
- Mountaineering qualified & professional trek Leader, guide, cook, and Support staff.
- First aid medical kits, stretcher, and oxygen cylinder.
- **Trek equipment:** Sleeping bag, mattress, tent, kitchen & dining tent, toilet tent, utensils, and crampon (if required)
- Staff Insurance.
- Porters/mules to carry central equipment.





# EXCLUSIONS

- Any kind of personal expenses.
- Food during transit.
- Mules or porters to carry personal luggage.
- Insurance.
- Transport (Non Ac)
- Any kind of emergency evacuation charges
- 5% GST
- Any expense incurred or loss cost by reasons beyond our control such as bad weather, natural calamities delays/rescheduling/ evacuations (Landslides, cancellations, Flight delay any accidents/medicals riots/strikes/war/pandemics etc.
- Anything not specifically mentioned under the head.



# WHAT TO CARRY



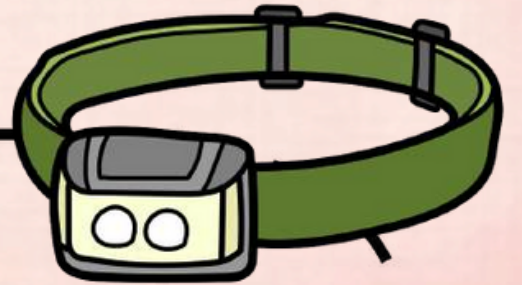
TREKKING SHOES



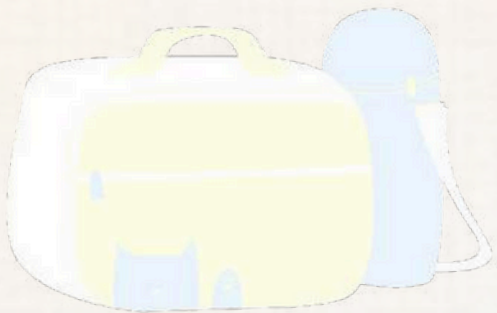
BACKPACK



HAND GLOVES



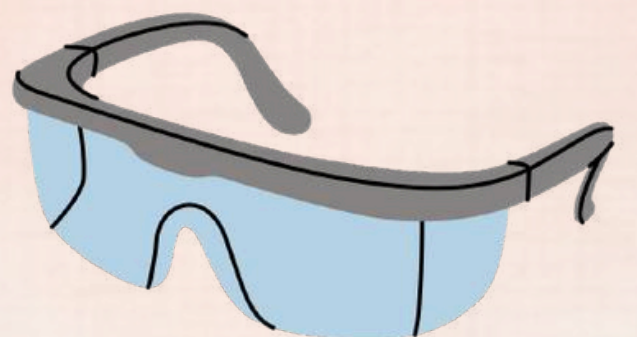
HEAD LAMP



LUNCHBOX



SOCKS



UV SUNGLASSES



THERMALS



3 TSHIRTS



JACKETS



2 TREK PANTS



CAP



FLEECE & HOOD



RAIN COVER <sup>11</sup>

# CANCELLATION POLICY

Life is unpredictable and we understand sometimes you have to cancel or change your trip dates and it is our endeavour to make it as easy possible for you. However, please understand we plan everything including guide fees, permits, accommodation and ration in advance. Therefore any cancellation means inconvenience and certain losses to the people involved in various stages of programme. Keeping that in mind, our cancellation charges are as below- Cancellation prior to 30 days from start of the event: Get monetary refund with 15% of cancellation charges on trek fee.

*Cancellation between 30 days and 15 days to the start of event: 50% on trek fee is non refundable and the remaining 50 % will be given as cash voucher which is valid for 1 year. Cancellation less than 15 days to the start of event: No refund. Please note cancellation will be only accepted by email. Booking amount is non refundable.*



# CANCELLATION POLICY

Note: The Namaste Explorer reserves the right to cancel a programme before departure in the event of logistical problems arising due to natural calamities, strikes, wars or any other circumstances that makes the event inadvisable. In this case, 50% on trek fee is non refundable and the remaining 50 % will be given as cash voucher which is valid for 1 year. Itinerary changes & trip delays: We plan itineraries based on the information at the time of planning and in rare circumstances, there are subject to change. In the event that the itinerary is changes or delayed due to unforeseen circumstances such as bad weather conditions, transportation delays, government intervention, landslides etc. We will always aim to give you the best experience possible. However The Namaste Explorer are not be held responsible for the cost of delay or changes

## CONTACT US



[info@namastehimalaya.com](mailto:info@namastehimalaya.com)



+91 7536014751



# Payment



Namastey Himalaya



UPI ID: namasteyhimalaya-1@okaxis

## CONTACT US



[info@namastehimalaya.com](mailto:info@namastehimalaya.com)



+91 7536014751

